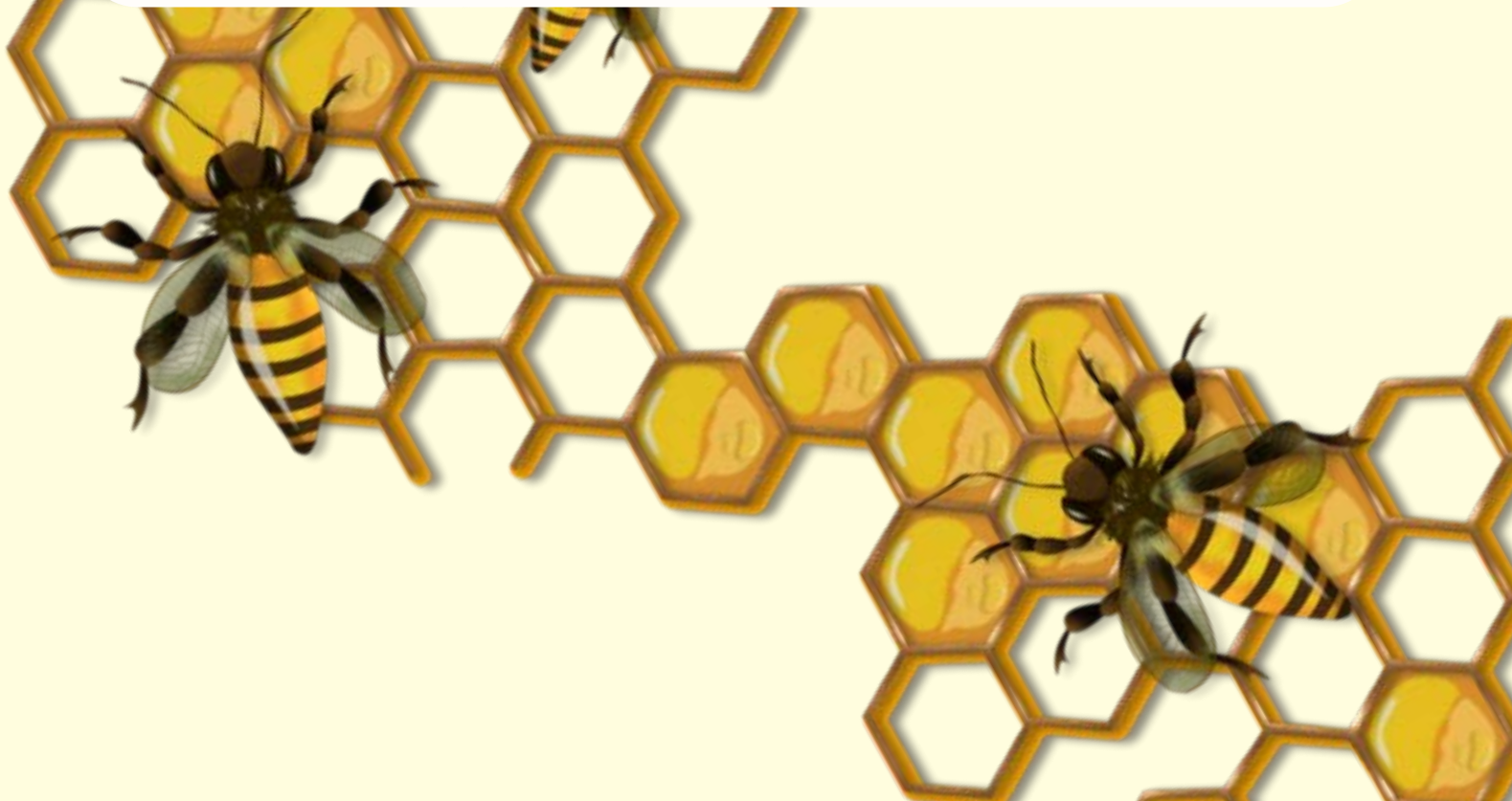


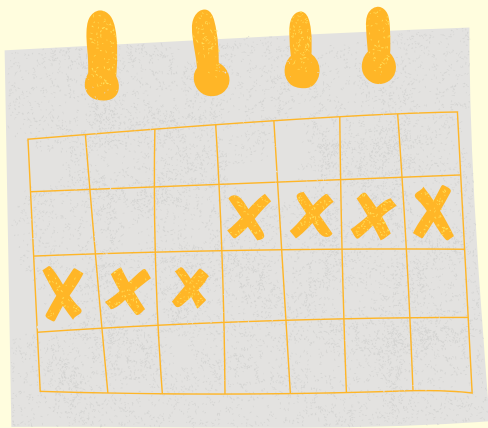
# **August 2022 Newsletter**

**Dane County Parks  
Volunteer Program**



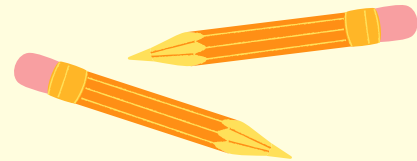
# Greetings!

We hope you have had a fantastic August so far! It's certainly been a busy month with many volunteer-led workdays, staff events, and groups reaching out to work with all of us in the Dane County Parks system. As we move into the Fall we've started to see a change in our volunteer opportunities - some are highlighted here in this newsletter. Enjoy!



[!\[\]\(99f58673407353e96a019fbca558fd72\_img.jpg\) Event Calendar](#)

[!\[\]\(0f848bbd71cef6b345273b16f905912a\_img.jpg\) Dane County Parks Map](#)



**Questions?**

**Contact Claire Lamberg**

**(608) 516-3703**

**[lamberg.claire@countyofdane.com](mailto:lamberg.claire@countyofdane.com)**

# Events for our Volunteers

## Upcoming Volunteer Opportunities

### Restoration Workdays

August 23 - [Walking Iron County Park](#)

September 2 - [Walking Iron County Park](#)

September 13 - [Walking Iron County Park](#)

### Prairie Workdays

August 26 - [Lussier Family Heritage Center](#)

September 2 - [Lussier Family Heritage Center](#)

September 9 - [Lussier Family Heritage Center](#)

### Bumble Bee Survey

August 24 - [Lake Farm County Park](#)

**Click the event for more information, or view our Events Calendar**

## \* Friends Events

August 27 - [Pheasant Branch Educational Guided Walk](#)

August 31 - [Pheasant Branch Monarch Tagging](#)



This photo was taken July 22nd at a DCP Restoration Workday at Indian Lake County Park! Volunteers, including a SSM Health group, joined our Natural Areas team to remove invasive Japanese Hedge Parsley and clear brush.

## Events Continued:

# Native Seed Collections

August 26 - Festge County Park

August 30\* - CamRock County Park

August 30\* - Ice Age Reddan

September 2\* - Walking Iron

September 2\* - Indian Lake

September 6 - Ice Age Mckee

September 7\* - Anderson Dog Park

September 7\* - Ice Age Reddan

September 9 - Swamplovers

And more!



**\*Notice how there are multiple events for some dates - double check the calendar to ensure you arrive at the correct workday!\***



Above: a Wild Yarrow seed head

August and September dates have different signups - click on the date you're interested in to learn more!

---

## Why do we hold seed collections?

Each year volunteers, DCP staff, partners, and Operation Fresh Start participants collect and process native plant seed from prairie, savanna, wetland, and woodland ecosystems. In 2021, the seed collected had an estimated worth of approximately \$1,256,494.10 and was allocated for restoration projects across the county, with most of it being seeded on approximately 300 acres of new restorations last winter. Without seed collection efforts, this level of restoration would not be financially possible!

# Upcoming Volunteer Trainings

---

## DCP Land Steward Trainings

### A Beginner's Guide to ISMTrack (Virtual)

Tuesday, September 13 - 6pm-7pm

### Advanced ISMTrack and EDDMaps Pro Apps (In-Person)

Wednesday November 9, 9am-10am  
and 10:30am-11:30am

These trainings are important for Land Stewards, but are still available to other volunteers if they wish to learn more about these subjects. If you are not a Land Steward but are still interested in these trainings, contact Claire Lamberg at [lamberg.claire@countyofdane.com](mailto:lamberg.claire@countyofdane.com)

---

## Herbicide Application (PAT) Certification

There are trainings for herbicide applications, and separate trainings for those who wish to become Certified Pesticide Applicators. For more information on these trainings, click [here](#).

---

## Chainsaw Safety Trainings

SAWW Level 1: October 7-8 @ Indian Lake County Park

SAWW Level 2: October 12-13 @ Indian Lake County Park

**[Click HERE](#) to fill out a survey regarding what kinds of trainings YOU would like to see more of.**



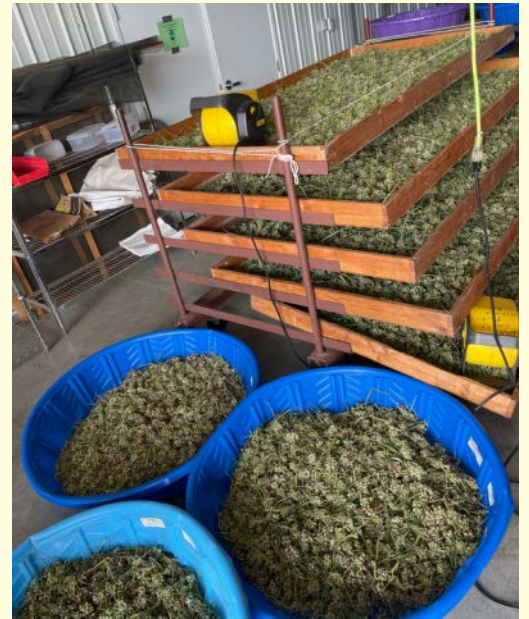


# July Recap!

Volunteers joined us at three prairie workdays, four seed collections, five restoration work days, and at numerous other events!



Spiderwort Seed Collection at Schumacher Farm on July 7



In July, DCP staff and volunteers began seed collection! Pictured here is Spiderwort, a native perennial that has clusters of purple flowers. Once seed heads are collected, they are brought to the processing room where they are laid out in pools to dry.





# Volunteer Spotlight

## Mary "Gigi" Holland

Volunteer Master Gardener at Tenney Park Lock and Dam

Gigi Holland has been instrumental in the establishment and maintenance of the gardens at Tenney Park Lock and Dam. She began volunteering there in 2000 at a time when maintenance of the area and available resources were minimal. It was clear to her that the breakwater and land adjacent to the Lock and Dam held beauty and value, especially with being so popular with visitors, and the area needed a lot of work.



Her work began with the garden strip along the boathouse wall, which parallels the breakwater sidewalk. It is currently plentiful with snapdragons, Gigi's favorite flower (she admires their resilience and beautiful colors!), along with hardy sedum and juniper. She's battled weeds for years, including weeding the entirety of the breakwater by hand on several occasions. It surely looks tremendously better than it did 22 years ago.



Gigi worked with another Master Gardener to plan the garden at the base of the DCP Tenney Lock master sign - making it one of the most striking signs in the DCP system. About 5-6 years ago, Gigi started managing the native rain garden that borders the Yahara River. Thanks to the county's partnership with Operation Fresh Start (OFS), Gigi is able to host OFS work crews once a month. They provide the spark that keeps the rain garden looking so good!



Gigi finds great joy in this space and loves to hear when Tenney Lock visitors find something beautiful in the gardens. To Gigi, the garden has gained huge dividends in the form of positive feelings from the public and obvious enjoyment of the space. Since beginning in 2000, she notes that there's been at least a 50% increase in the people who spend their time at the breakwater - the site has become very popular for fishing, picnics, out-of-town visitors, local neighbors, and weddings. About a year ago, Sue Deakman, another gardening volunteer, became involved with the gardens at Tenney Locks. This is the second summer Gigi and Sue have been working together and Sue is diligently working to learn all she can from Gigi, since she may very well retire from this space one day!

Ever dedicated, Gigi has maintained a number of public gardens and spaces over the years, including the gardens at the Gates of Heaven in James Madison Park and at the Warner Park Community Recreation Center. We are very grateful to Gigi Holland for all the tremendous work she has put into Tenney over the past 20 years!

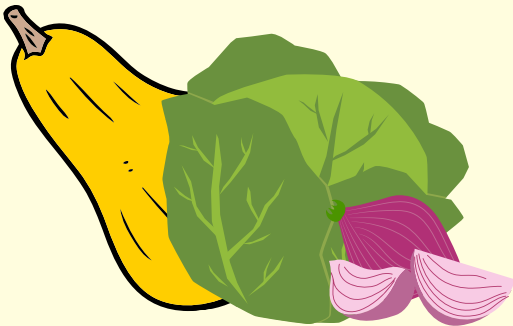


## Friends Group Feature:

# Anderson Park Friends

"Anderson Park Friends Inc. (APF), established in September 2013, is a 501 (c) (3) non-profit organization working with the Dane County Parks Department to develop, protect, preserve, and enhance beautiful Anderson Farm County Park."

### Did you know?



APF's Anderson Farm Center supports a Food Pantry Garden and 22 community garden plots for Hmong families.

**August is a HUGE harvest month and volunteers are needed to help harvest all the fresh produce!**

Harvested food goes to food pantries around Oregon, Belleville, and Verona.



Regular volunteer harvesting events are Tuesdays from 8:30am to 10:30am at 805 Union Road, just north of the house. Other shifts are scheduled when volunteers (groups included) are available. Contact Barb Hill at 608-835-9090 or [bmhill@wisc.edu](mailto:bmhill@wisc.edu) with questions or to let her know you'll be joining the workday.

Looking for a fun summer recipe?



Visit their website for more information [HERE](#)



@AndersonParkFriendsInc



# Staff Spotlight

[Read Claire's initial hiring announcement here!](#)



## Claire Lamberg Land & Water Volunteer Coordinator

Claire in her new office at 4212 Robertson Rd.



Claire has been in the position of Land & Water Volunteer Coordinator since January of 2022, and it has been a quick 7 months. She especially enjoys the relationships she holds with each Dane County Parks volunteer and looks forward to strengthening those connections into the future. Her position involves scheduling, coordinating, and promoting hundreds of volunteer opportunities within the DCP system, while collaborating with 20+ Friends Groups and Park staff on a number of different topics. Though in the office much of the time, Claire looks forward to joining in at a volunteer event whenever she has the opportunity to do so!



**Favorite Dane County Park:**

Too many to list. Morton Forest is pretty special if you haven't visited there yet.



**Favorite Park Activity:**

Mountain Biking at CamRock, Seminole, & Badger Prairie, and long, challenging hikes.



**Favorite Thing to Spot in the Parks:**

Volunteers out in the parks doing the things they most enjoy!





# Volunteer Photo Submission



Dane  
County  
Tenney  
Lock Rain  
Garden



Master  
Gardener  
Gigi  
Holland  
plans for  
the 2022  
season.



Photos:

Sue Deakman and Gigi Holland  
July 2022



4  
fledglings  
Bluebirds at  
Stewart  
Lake



Volunteers after uncovering a beautiful oak tree  
at a Lower Mud Lake Natural Resource Area  
(LMLNRA) workday

Photo: Kathy Pease, Friends of LMLNRA  
August 2022



Photo: Jack Saltes, Friends of Stewart Lake  
August 2022



# Volunteer Photo Submission



Want to see your photo featured in next month's newsletter? Submit a photograph to the google form [here](#)! Photos must be appropriate and relevant to Dane County Parks, volunteering, nature, conservation, wildlife, or the outdoors.



**National Honey Bee Day  
August 22nd**



**Check out  
these native  
bee species!**

Did you know that honey bees are an "introduced species"? All extant honey bees are indigenous to Eurasia. High densities of honey bee populations compete with the native bees, putting increasing pressure on wild bee species that are already struggling. Let's celebrate National Honey Bee Day by taking note of what we have to be grateful to honey bees for, but also acknowledging our many species of native bees in our gardens and natural areas!



# Thank you for all your hard work and dedication to your parks!

Check out these pages to see what we're up to:



[@DaneCountyParks](#)



[@danecountyparks](#)



[@DaneCountyParksFlickr](#)



[Join the newsletter email listing](#)

