

DANE COUNTY PARKS

INFORMATION & EVENTS NEWSLETTER

JULY 9, 2020



Lower Yahara River Trail

BLW Neighborhood Center - Get Outside summer youth program

BIKE COLLECTION

We are still looking for a few more gently used bikes for our summer youth **Get Outside** program. The bikes will allow youth (ages 7-14) from local community centers to get around and explore our parks this summer.

Requirements: child, teen or adult bikes with working brakes, pedals and tires that are in good condition.

Drop off by Appointment: If you have a bike to donate, please arrange a time **in advance** to drop it off at the Lussier Family Heritage Center (3101 Lake Farm Road, Madison) by calling **608-224-3604** or emailing **heritagecenter@countyofdane.com**



NEW NATURAL PLAY AREA

We are in the process of adding a new natural play area that will accompany the existing yellow play structure at **CamRock County Park**. The playground is scheduled to be completed by the end of the week and will offer a unique mix of traditional and natural play equipment.

Encouraged by the community, parks staff and GRG Playscapes met at the playground with Catherine (Cate) Boldt, an ADA Accessibility Consultant, and made some changes to the original design to make it more accessible to those with mobility challenges.

Learn more about this project on our website!



[Learn More](#)

CONSERVATION CORNER

All Episodes

Stay connected with our weekly conservation corner series! New episodes posted each Friday on our social media sites. This week, Christal Campbell gives a demonstration on stormwater runoff. Learn preventative measures you can take at home to help mitigate stormwater and pollution from getting into our lakes, rivers, and streams.



OAK SAVANNA RESTORATION

Learn more about a 17-acre Oak Savanna Restoration Project happening at Indian Lake County Park from Dane County Parks Naturalist/Botanist, Lars Higdon. Oak savanna was once one of the most common vegetation types in the Upper Midwest but today is highly endangered with only a fraction of one percent remaining.

[Learn More](#)



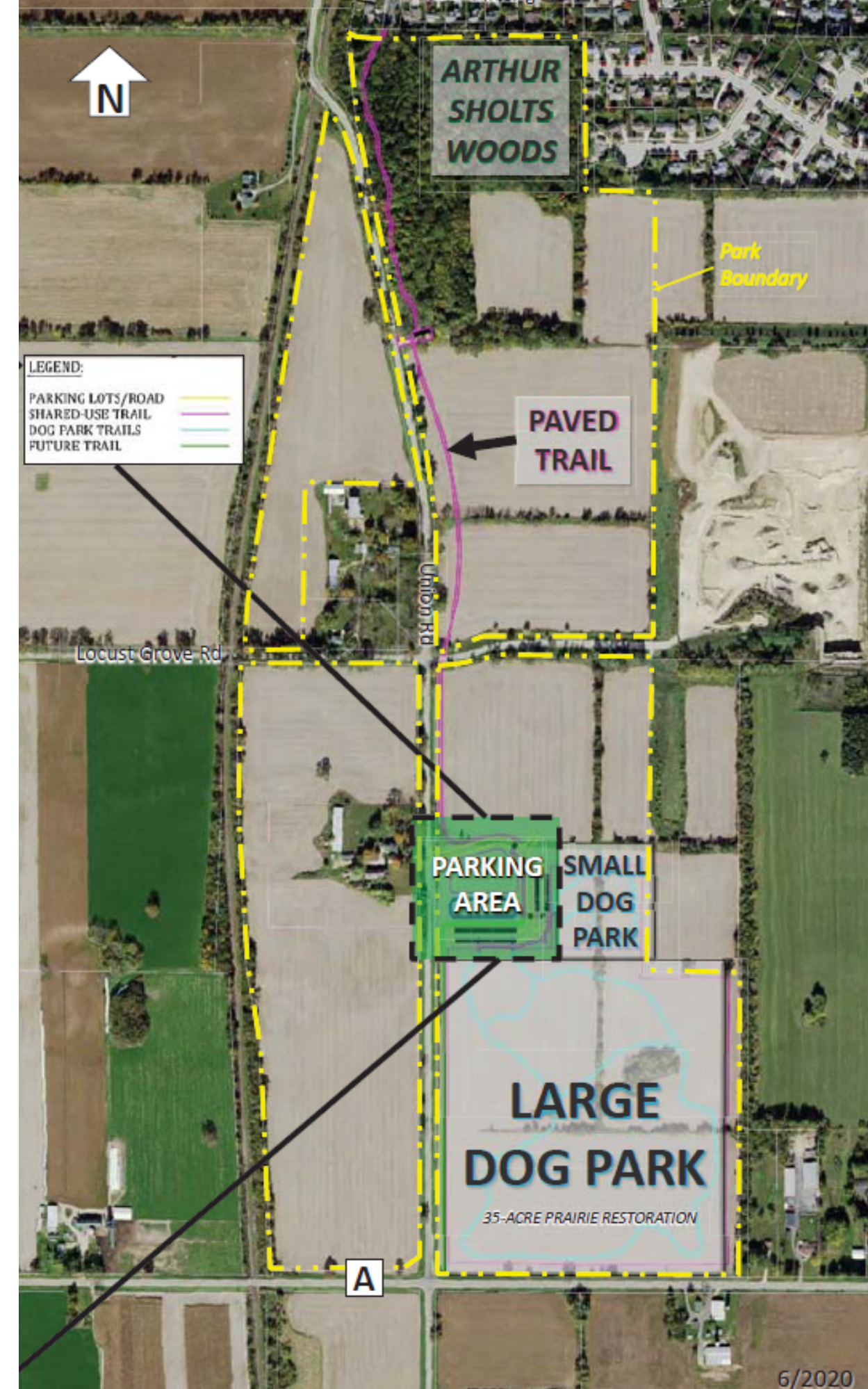
FUTURE DOG PARK

Dane County Parks will begin construction of the county's eighth dog park this July at Anderson Farm County Park in the Town of Oregon. The approximately 40-acre off-leash dog park will be enclosed with perimeter fencing and offer a separate area for small dogs. The dog park is anticipated to open in 2021 and will be the county's third largest dog park.

Want to support this and other dog park projects? Purchase your dog permit directly from Dane County Parks. Permits purchased through local municipalities do not support our dog parks. A list of Dane County Dog Parks is below:

- **TOKEN CREEK**
- **YAHARA HEIGHTS**
- **PRAIRIE MORAINE**
- **BADGER PRAIRIE**
- **CAPITAL SPRINGS**
- **VIKING**
- **INDIAN LAKE**

[Learn More](#)



SOCIAL SPOTLIGHT



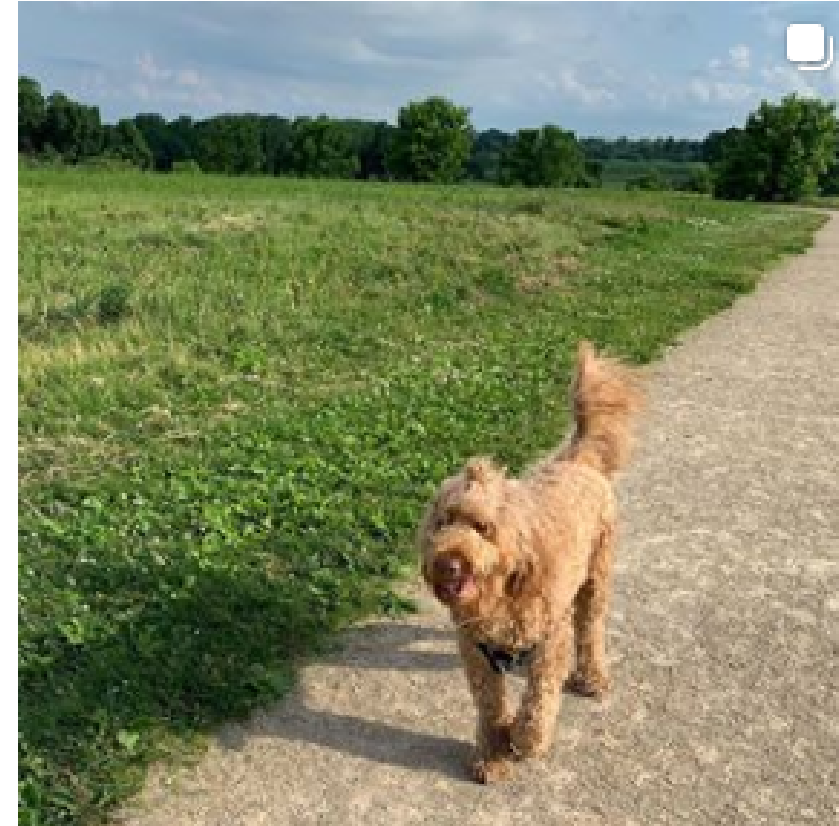
Indian Lake County Park

@madnewsboy



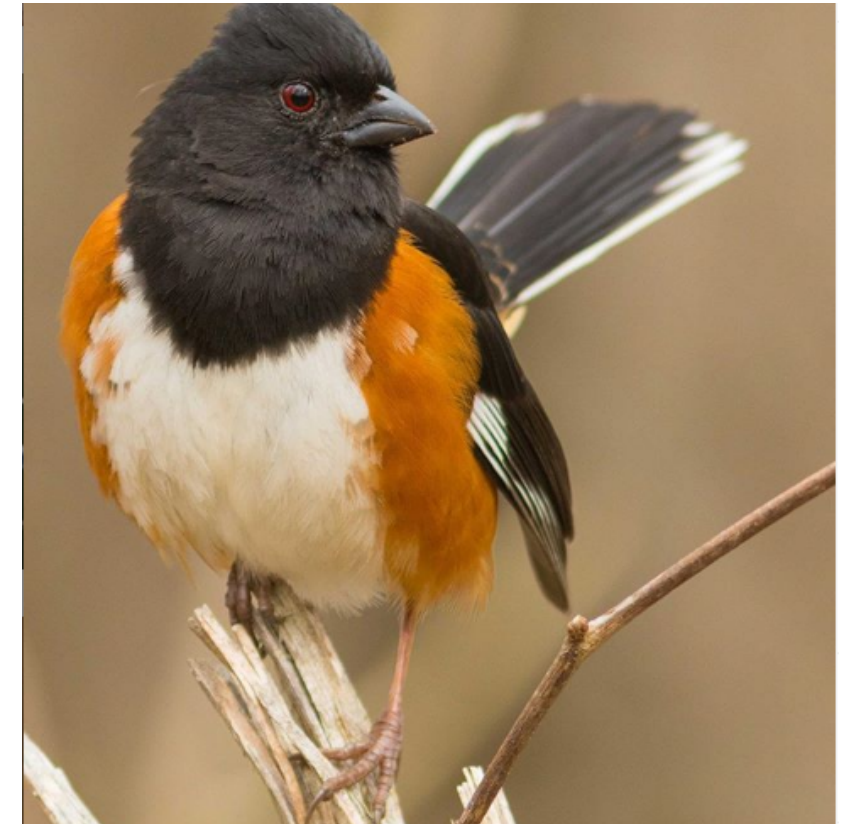
Token Creek County Park

@briannakraftphotography



Capital Springs Dog Park

@iamcottyb



Donald County Park

@second_nature_photo

Share your photos with us **#danecountyparks**



NATURAL AREAS ART FUNDRAISER

Dane County Parks manages over 12,000 acres of habitat that support thousands of species of wildlife. Our Natural Areas Program maintains and restores these valuable natural environments. Can you help us with a donation to help support these lands?

With each \$20 donation, you can request a sticker, magnet or window cling featuring winning artwork from this year's Natural Areas Art Contest. All funds raised will be used to support land management in Dane County Natural Areas, including, prairie plantings, staff support, and restoration efforts. Click on the button below to learn more or to donate.

