

DANE COUNTY PARKS

INFORMATION & EVENTS NEWSLETTER

JULY 22, 2021



*Schumacher Farm Park
Chicken Wrangling Workshop*

PRESENTATIONS IN THE PARK

Join us TONIGHT for a free, outdoor presentation about **Monarch and Butterfly Biology and Conservation** featuring Dr. Karen Oberhauser from the UW-Madison Arboretum. Gates open at 5:30 p.m. and the talk starts at 6:00 p.m. Bring a chair or blanket to sit on.

Melted and Delta Beer Lab will be onsite, so make sure you come early and grab dinner and drinks!

Location:

Lussier Family Heritage Center
3101 Lake Farm Road, Madison

[Learn More](#)



Monarch Butterfly Biology & Conservation



Nature Notes

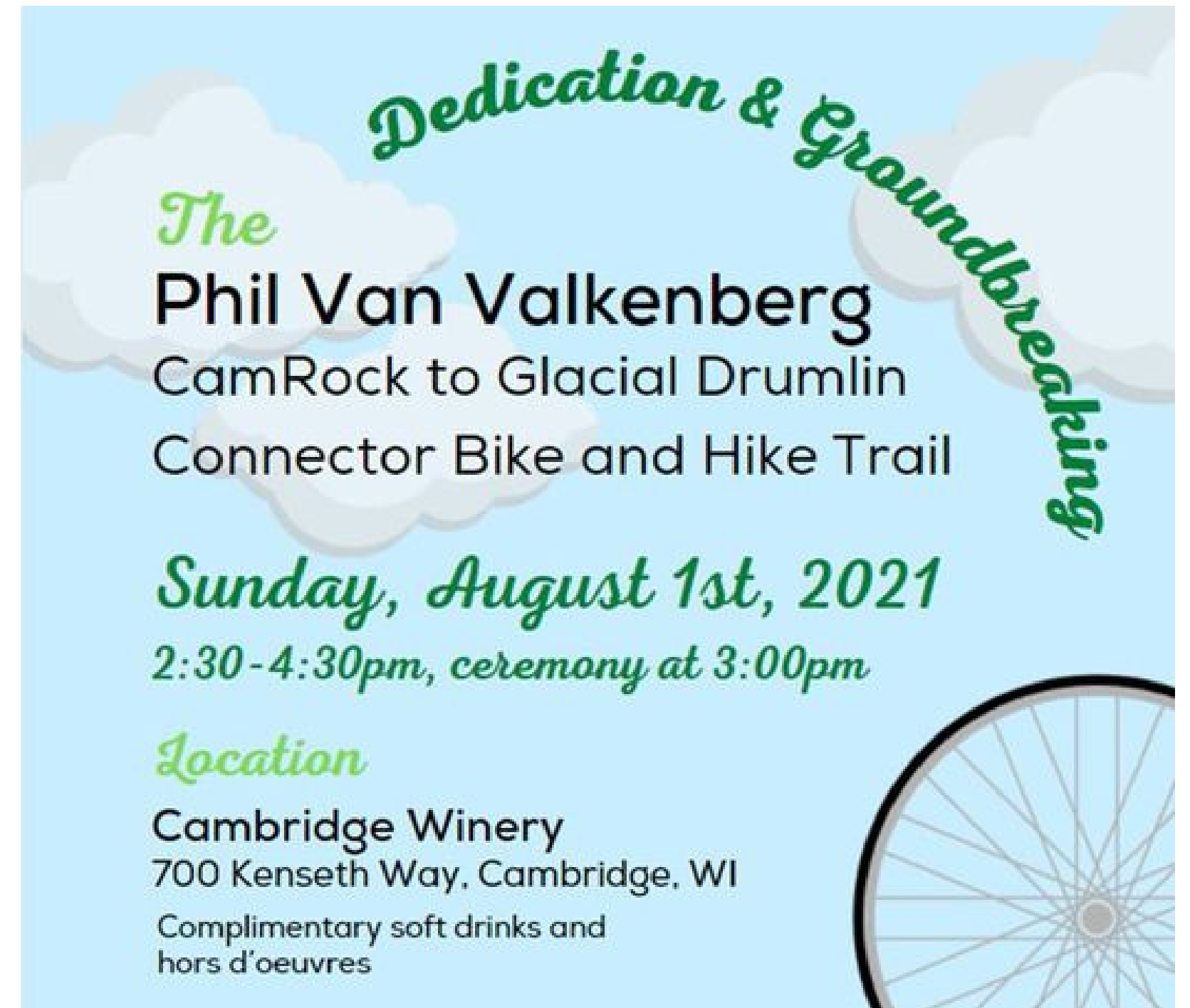
from the Lussier Family Heritage Center
a Dane County Parks Facility

NEW CONNECTOR TRAIL

Dane County has been partnering with the Village of Cambridge, Jefferson County, Friends of the CamRock to Glacial Drumlin Connector Trail and Cambridge Foundation for nearly 15 years on planning and development of a trail that will one day provide a continuous connection between CamRock County Park and the Glacial Drumlin State Trail. The next segment of that trail is now complete!

The Friends of the CamRock to Glacial Drumlin Connector Trail will be hosting a groundbreaking event on Sunday August 1st from 2:30-4:30 pm with live music, a silent auction and complimentary soft drinks and hors d'oeuvres.

[Learn More](#)




Dedication & Groundbreaking

The
Phil Van Valkenberg
CamRock to Glacial Drumlin
Connector Bike and Hike Trail

Sunday, August 1st, 2021
2:30-4:30pm, ceremony at 3:00pm

Location
Cambridge Winery
700 Kenseth Way, Cambridge, WI
Complimentary soft drinks and
hors d'oeuvres



ARCHERY LIMITED ACCESS PERMITS



Archers interested in applying for an opportunity to receive a 2021 Dane County Parks Archery Limited Access Permit may apply now through Tuesday, August 16, 2021 at 11:59 p.m. The program provides opportunities for archers to hunt deer and fall turkey on specific county lands with the required State licenses.

This year, 204 Limited Access Archery Permits will be available. Winners will be notified via email with a link to purchase the permit for the property won.

[Learn More](#)

CHICKEN WRANGLING WORKSHOP

Join the Friends of Schumacher Farm Park and Bob Bennin, Head Chicken Wrangler, for their free Chicken Wrangling Workshop on August 16 at 4pm. You will learn how to care for chickens and hear the history of chickens on the farm. Children are welcome. Drop in - no registration required.

Location:

Schumacher Farm Park

5682 State Highway 19, Waunakee



[Learn More](#)



NATURE PHOTOGRAPHY WORKSHOP

Join the Friends of Schumacher Farm Park and award-winning local photographer Rona Neriln for a photography workshop on August 19.

With an emphasis on assisting beginner and intermediate level photographers, Rona discusses the basics of nature photography techniques, light, composition, and photographic subjects to look for on the prairie and farmstead.

Cost: \$8 per person. Registration required.



[Learn More](#)



BIRD AND NATURE WALK

Join the Friends of Capital Springs and naturalist Clare Carlson for a bird and nature walk on August 14.

The walk will travel along the prairie trail along the Nine Springs Creek and also venture into the Madison Metropolitan Sewerage District's Wildlife Observation Area to check out the lagoons for ducks and wading birds.



[Learn More](#)

Friends of
Capital
Springs



STARGAZING EVENT

The Madison Astronomical Society along with the Friends of Donald County Park invite you to view the night sky and Perseid Meteor Showers on August 7th. View the planets and stars through the telescopes provided or bring your own telescope. Bring your family and friends and roast marshmallows around the firepits that are available.

Location:

Donald County Park
Pop's Knoll (1945 State Highway 92, Mt. Horeb)



[Learn More](#)


FRIENDS OF DONALD PARK
.....STEWARDS OF THE FUTURE

FALL RUNNING EVENTS

This fall, Dane County Parks and park Friends groups have three unique running events to get your heart pumping while soaking in the fall scenery. No matter what type of race you are looking for, we have something for you! Race registration fees will help support park maintenance and educational activities so you can feel extra good about your participation.



Donald Dash

Saturday, September 11

5km and 15km options traveling through prairies, woods, and over all types of terrain.

[Learn More](#)

Indian Lake Trail Run

Saturday, October 2

7km and 12km options traversing prairie, woodlands, sedge meadows, and newly restored oak savanna.

[Learn More](#)

Monster Dash

Friday, October 15

A sunset 5k run, walk, or roll along the Lower Yahara River Trail and through our haunted prairie and forest.

[Learn More](#)

BEER CELLAR RESTORATION

Have you heard about the beer cellar restoration at CamRock County Park?

The beer cellar was constructed in 1865 when the old Rockdale brewery was built and was used to store brewery products in the summer. The brewery was eventually converted into a creamery and the beer cave/cellar was no longer used for storage. A personal history of the area, written by Frances Niederer in 1966, describes the later use of the beer cave as a warming hut – used by people skating in the winter on the millpond.

Over the years, part of the cave collapsed and it is being restored by park volunteer and Koshkonong Prairie Historical Society member Richard Moen.

Read the recent article from the Cap Times by clicking below:

[Learn More](#)



Dane County volunteer restores a 'Beer Cave' in CamRock Park

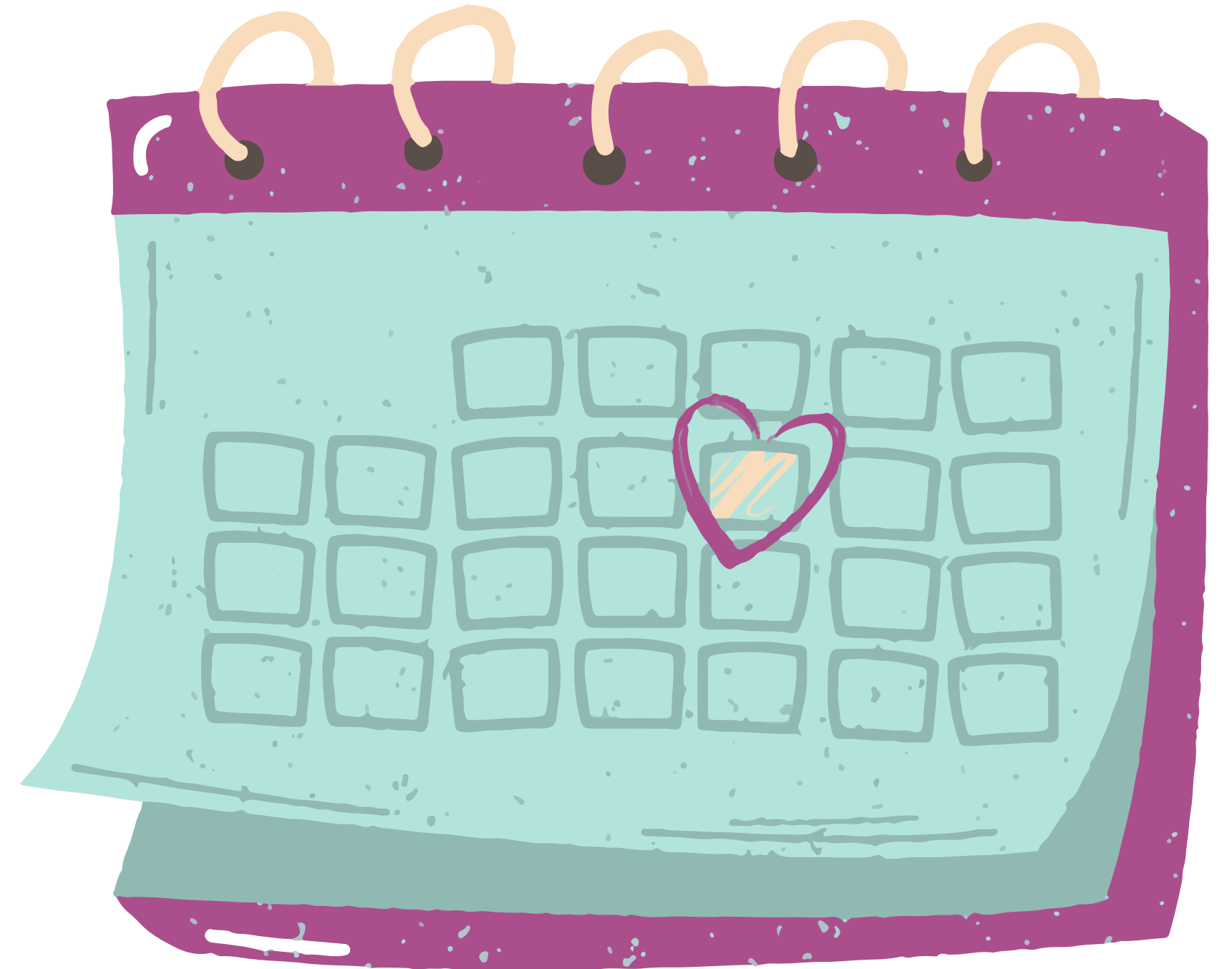
THE CAP TIMES

FULL CALENDAR OF EVENTS

For more event listings, check out the event calendar on our website. Events include:

- Youth Adventure Days
- Volunteer Workdays
- Music and craft events hosted by friends groups
- and more!

[Learn More](#)



NEWSLETTER SIGN UP

If someone forwarded you this newsletter you can **sign up** to receive future editions on our website:

[Sign Up](#)

